

# kwik

HOSPITALITY EQUIPMENT

**HUGE DISCOUNTS  
ON ALL WAREHOUSE STOCK  
SPRING 2022  
WHILE STOCKS LAST**

*SPRING*

**WAREHOUSE  
SALE**

**CALL OUR  
FRIENDLY SALES TEAM  
TODAY  
4226 9779**



**CLICK HERE**



SilverChef.

**APPLY FOR FINANCE**

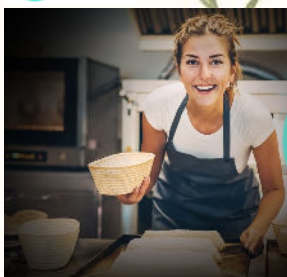
Get approved for up to  
**\$65,000**  
within 10 minutes.

### Flexible equipment finance

- High approval rate
- Low weekly payments
- 12 month rental agreement
- Upgrade or return equipment if your needs change.

Don't dream, Do.

SilverChef.



**TEMPERATE**  
**thermaster**

**1 Glass Door Upright Fridge**

**370 Litre**

**LG-370GE**

**\$1,510 + GST**

SilverChef. \$21.08  
Per Week



**TEMPERATE**  
**thermaster**

**1 Glass Door Upright Fridge**

**540 Litre**

**LG-540GE**

**\$1,850 + GST**

SilverChef. \$25.83  
Per Week



**TEMPERATE**  
**thermaster**

**2 Glass Door Upright Fridge**

**1000 Litre**

**LG-1000GE**

**\$2,250 + GST**

SilverChef. \$31.41  
Per Week



**NSW GOVERNMENT** | **Energy Saver** | **Ask our friendly sales team how you can save \$\$\$ on your next Glass Door Fridge Purchase with NSW Energy Rebates AVAILABLE NOW !!**

**ATOSA**

**1 Glass Door Upright Fridge**

**380 Litre**

**P380WA**

**\$1,510 + GST**

SilverChef. \$21.08  
Per Week



**ATOSA**

**1 Glass Door Upright Fridge**

**600 Litre**

**P600WA**

**\$1,850 + GST**

SilverChef. \$25.83  
Per Week



**ATOSA**

**2 Glass Door Upright Fridge**

**1000 Litre**

**P1000WB-A**

**\$2,250 + GST**

SilverChef. \$31.41  
Per Week



**BROMIC**  
REFRIGERATION

**2 Glass Door Upright Fridge**

**960 Litre**

**GM1000LWECO**

**\$2,245 + GST**

SilverChef. \$31.34  
Per Week



**TEMPERATE**  
**thermaster**

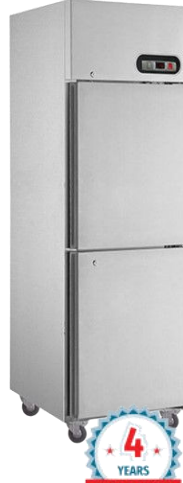
**2 Split Door Upright Freezer**

**500 Litre**

**SUF 500**

**\$2,715 + GST**

SilverChef. \$37.91  
Per Week



**TEMPERATE**  
**thermaster**

**4 Split Door Upright Freezer**

**1000 Litre**

**SUF 1000**

**\$3,745 + GST**

SilverChef. \$52.29  
Per Week



**Averm Quirks**

**1 Glass Door Upright Fridge**

**530 Litre**

**AQGDMF 1DW**  
**AQGDMF 1DB**

**\$1,530 + GST**

SilverChef. \$21.36  
Per Week



**Averm Quirks**

**1 Glass Door Upright Freezer**

**350 Litre**

**AQGDMFZ 1DW**  
**AQGDMFZ 1DB**

**\$1,920 + GST**

SilverChef. \$26.81  
Per Week



**SilverChef.**

**APPLY FOR FINANCE**

**kwik**  
HOSPITALITY EQUIPMENT

**4226 9779**



**Avem Quirks**  
**3 Glass Door Upright Fridge**  
**1075 Litre**  
**AQGDMF3DW**  
**AQGDMF3DB**

**\$3,510 + GST**

SilverChef. \$49.01  
Per Week



**SKOPE**  
**2 Glass Door Upright Fridge**  
**896 Litre**  
**TC1000N**  
**EziCore**

**\$2,740 + GST**

SilverChef. \$38.25  
Per Week



**SKOPE**  
**1 Glass Door Upright Fridge**  
**610 Litre**  
**TME-650N-A**

**\$3,540 + GST**

SilverChef. \$49.42  
Per Week



**SKOPE**  
**2 Glass Door Upright Fridge**  
**980 Litre**  
**TME-1000N-A**

**\$4,095 + GST**

SilverChef. \$57.17  
Per Week



**SKOPE**  
**3 Glass Door Upright Fridge**  
**1497 Litre**  
**TME-1500N-A**

**\$6,280 + GST**

SilverChef. \$87.68  
Per Week



Energy Saver

**Ask our friendly sales team how you can save \$\$\$ on your next Glass Door Fridge Purchase with NSW Energy Rebates AVAILABLE NOW !!**

**Avem Quirks**  
**1 Glass Door BackBar Fridge**  
**118 Litre**  
**AQBB1GDBLK**

**\$695 + GST**

SilverChef. \$9.08  
Per Week



**Avem Quirks**  
**2 Glass Door BackBar Fridge**  
**190 Litre**  
**AQBB2GDBLK**

**\$850 + GST**

SilverChef. \$11.87  
Per Week



**BROMIC REFRIGERATION**  
**2 Glass Door BackBar Fridge**  
**109 Litre**  
**BB0200GD-NR**

**\$1,150 + GST**

SilverChef. \$16.06  
Per Week



**Avem Quirks**  
**1 Solid Door S/Steel Fridge**  
**145 Litre**  
**AQUC1SDFSS**

**\$825 + GST**

SilverChef. \$11.52  
Per Week



**Avem Quirks**  
**1 Solid Door S/Steel Freezer**  
**145 Litre**  
**AQUC1SDF2SS**

**\$850 + GST**

SilverChef. \$10.05  
Per Week



**BROMIC REFRIGERATION**  
**3 Glass Door BackBar Fridge**  
**307 Litre**  
**BB0330GD-NR**

**\$1,190 + GST**

SilverChef. \$16.61  
Per Week



**kwik**  
HOSPITALITY EQUIPMENT

SilverChef.

APPLY FOR FINANCE

**4226 9779**



### Bench Fridge with S/Steel Work Top

GN2100TN - 313 Litre

GN3100TN - 464 Litre

GN4100TN - 615 Litre

**\$2,770 + GST**

SilverChef. \$38.67  
Per Week

**\$1,995 + GST**

SilverChef. \$27.86  
Per Week

**\$2,260 + GST**

SilverChef. \$31.55  
Per Week



**\$3,520 + GST**

SilverChef. \$49.14  
Per Week



**\$2,760 + GST**

SilverChef. \$38.53  
Per Week



### Glass Door Bench Fridge with S/Steel Work Top

GN2100TNG - 313 Litre

GN3100TNG - 464 Litre

GN4100TNG - 615 Litre

**\$2,475 + GST**

SilverChef. \$34.55  
Per Week



Energy Saver

Ask our friendly sales team how you can save \$\$\$ on your next Glass Door Fridge  
Purchase with NSW Energy Rebates AVAILABLE NOW !!



**\$2,485 + GST**

SilverChef. \$34.69  
Per Week



**\$3,235 + GST**

SilverChef. \$45.17  
Per Week

**\$2,690 + GST**

SilverChef. \$37.56  
Per Week

**SKIPIO**

by Experts, for Experts

### Bench Fridge with S/Steel Work Top

SUR12-2 - 280 Litre

SUR15-2 - 395 Litre

SUR18-3 - 505 Litre



### Chest Freezer with S/Steel Top

BD-450 - 358 Litre

BD-550 - 450 Litre

BD-650 - 560 Litre

**\$1,335 + GST**

SilverChef. \$18.64  
Per Week

**\$1,515 + GST**

SilverChef. \$21.15  
Per Week



**\$1,785 + GST**

SilverChef. \$24.92  
Per Week

**kwik**  
HOSPITALITY EQUIPMENT

SilverChef.

APPLY FOR FINANCE

**4226 9779**





**EZI20FA**  
\$1,180 + GST

SilverChef. \$16.47  
Per Week



**UCG045A**  
\$1,755 + GST

SilverChef. \$24.50  
Per Week



**UCG065A**  
\$2,180 + GST

SilverChef. \$30.44  
Per Week



**UCG085A**  
\$2,495 + GST

SilverChef. \$34.83  
Per Week



**UCG105A**  
\$2,680 + GST

SilverChef. \$37.42  
Per Week



**UCG135A**  
\$2,790 + GST

SilverChef. \$38.95  
Per Week



**UCG165A**  
\$3,350 + GST

SilverChef. \$47.77  
Per Week



**CD10B**  
\$190 + GST



**DELIVERY &  
INSTALLATION  
ALSO AVAILABLE**

**Ice-O-Matic**  
Ice. Pure and Simple

### GOURMET ICE MAKERS

**\* Crystal Clear Gourmet Conical Ice Cube \***

**EZI20FA** - 25kg per24hrs / 7kg Storage

**UCG045A** - 20.5kg per24Hrs / 8kg Storage

**UCG065A** - 27kg per24Hrs / 8kg Storage

**UCG085A** - 38.5kg per24Hrs / 15kg Storage

**UCG105A** - 47.5kg per24Hrs / 22kg Storage

**UCG135A** - 58kg per24Hrs / 22kg Storage

**UCG165A** - 69kg per24Hrs / 40kg Storage

**CD10B** - Water Filter System

**CASTOR SET** - To Suit All Models \$50 + GST  
(Castors Lower the Machine Height to Fit Under Counters)

**BESWOOD**

### DISHWASHERS & GLASSWASHERS

**ES32** - Upright Dishwasher

**SW900X** - Upright Dishwasher

**SW500** - Under Counter Dishwasher

**SW400** - Under Counter Glasswasher



**ES 32**  
\$7,950 + GST

SilverChef. \$110.99  
Per Week

**SW900X**  
\$7,800 + GST

SilverChef. \$108.90  
Per Week



**SW500**  
\$3,850 + GST

SilverChef. \$53.75  
Per Week



**SW400**  
\$2,960 + GST

SilverChef. \$41.33  
Per Week



**DELIVERY &  
INSTALLATION  
ALSO AVAILABLE**

**T-3M53058**  
\$910 + GST

SilverChef. \$12.71  
Per Week

**ASSD-1270**  
\$670 + GST

SilverChef. \$9.35  
Per Week



**AWSD-1270**  
\$470 + GST

SilverChef. \$6.56  
Per Week

**CLEANJET kwik**  
STAINLESS STEEL HOSPITALITY EQUIPMENT

**T-3M53058** - S/Steel Dual Hob  
Mounted Pre-Rinse Spray Unit with  
12" Swing Spout

**ASSD-1270**—S/Steel Dishwasher Inlet  
Bench with Sink—1200x700 mm

**AWSD-1270**—S/Steel Dishwasher  
Outlet Bench 1200x700 mm

SilverChef.

**APPLY FOR FINANCE**

**4226 9779**

**kwik**  
HOSPITALITY EQUIPMENT

woodson

**BENCHTOP FRYERS**

- W.FRS50 - SINGLE PAN 5 Litre
- W.FRS80 - SINGLE PAN 8 Litre
- W.FRT50 - TWIN PAN 2 x 5 Litre
- W.FRT80 - TWIN PAN 2 x 8 Litre

**W.FRS50**  
\$540 + GST

SilverChef. \$7.54  
Per Week

**W.FRS80**  
\$590 + GST

SilverChef. \$8.24  
Per Week

**W.FRT50**  
\$915 + GST

SilverChef. \$12.77  
Per Week

**W.FRT80**  
\$1,035 + GST

SilverChef. \$14.45  
Per Week



**W.CT6**  
\$915 + GST

SilverChef. \$12.77  
Per Week

**W.GTQI8.10**  
\$755 + GST

SilverChef. \$10.54  
Per Week



**W.GTQI15**  
\$875 + GST

SilverChef. \$12.22  
Per Week

woodson

**BENCHTOP GRILLS**

- W.CT6 - 4 to 6 SLICE
- W.CT8 - 6 to 8 SLICE
- W.GTQI8.10 - 8 SLICE
- W.GTQI15 - 15 SLICE

**W.CT8**  
\$995 + GST

SilverChef. \$13.89  
Per Week



**ROBAND**

**BENCHTOP FRYERS**

- FR15 FRYPOD - SINGLE PAN 5 Litre
- FR18 FRYPOD - SINGLE PAN 8 Litre
- FR25 FRYPOD - TWIN PAN 2 x 5 Litre
- FR28 FRYPOD - TWIN PAN 2 x 8 Litre



**FR15**  
\$570 + GST

SilverChef. \$7.96  
Per Week

**FR18**  
\$620 + GST

SilverChef. \$8.66  
Per Week



**FR25**  
\$1,020 + GST

SilverChef. \$14.24  
Per Week

**FR28**  
\$1,105 + GST

SilverChef. \$15.43  
Per Week

**GSA610S**  
\$940 + GST

SilverChef. \$13.12  
Per Week



**GSA810S**  
\$1,030 + GST

SilverChef. \$14.38  
Per Week

**GMX810**  
\$695 + GST

SilverChef. \$9.70  
Per Week



**GMX1515**  
\$895 + GST

SilverChef. \$12.50  
Per Week

**ROBAND**

**BENCHTOP GRILLS**

- GSA610S - 4 to 6 SLICE
- GSA810S - 6 to 8 SLICE
- GMX810 - 8 SLICE
- GMX1515 - 15 SLICE

**ANVIL**

**FOOD SLICERS**

- SLL0200 - 195mm BLADE
- MSA3220 - 220mm BLADE
- MSA3250 - 250mm BLADE
- MSA3300 - 300mm BLADE



**SLL0200**  
\$530 + GST

SilverChef. \$7.40  
Per Week



**MSA3220**  
\$645 + GST

SilverChef. \$9.01  
Per Week

**MSA3250**  
\$745 + GST

SilverChef. \$10.40  
Per Week

**MSA3300**  
\$1,065 + GST

SilverChef. \$14.87  
Per Week

**kwik**  
HOSPITALITY EQUIPMENT

SilverChef.

APPLY FOR FINANCE

**4226 9779**





### MIXERS

1005004 - 7 Litre  
B7B - 7 Litre  
B10KG - 10 Litre  
B20KG - 20 Litre  
SP25 - 25 Litre



**1005004**  
**\$965 + GST**

SilverChef. \$13.47  
Per Week



**B7B**  
**\$860 + GST**

SilverChef. \$12.01  
Per Week



**B10KG**  
**\$1,090 + GST**

SilverChef. \$15.22  
Per Week



**B20KG**  
**\$1,560 + GST**

SilverChef. \$21.78  
Per Week



**SP25**  
**\$4,495 + GST**

SilverChef. \$62.76  
Per Week



**R211 XL**  
**\$1,675 + GST**

SilverChef. \$23.39  
Per Week



**CL 50**  
**\$2,230 + GST**

SilverChef. \$31.13  
Per Week



**MINI MP 160 V.V**  
**\$490 + GST**

SilverChef. \$6.84  
Per Week

**CMP 250 V.V**  
**\$920 + GST**

SilverChef. \$12.84  
Per Week

**MP 350 Ultra**  
**\$1,185 + GST**

SilverChef. \$16.54  
Per Week



### FOOD PROCESSORS

**R211 XL - 2.9L Bowl Plus 4 x Discs**  
**CL 50 - VEG PREP / Discs Extra**  
**MINI MP 160 V.V - Mix 5-10 Litres**  
**CMP 250 V.V - Mix 15 Litres**  
**MP 350 ULTRA - Mix 50 Litres**



### RICE COOKERS

**ERC6L - 6 Litre / 33 Cup**  
**ERC9L - 9 Litre / 50 Cup**  
**CR3521 - 6.3 Litre / 33 Cup**



### HOT WATER URNS

**W.URN10.B - 10 Litre**  
**W.URN20.B - 20 Litre**  
**W.URN30.B - 30 Litre**



**ERC9L**  
**\$375 + GST**



**CR3521**  
**\$335 + GST**



**W.URN10.B**  
**\$260 + GST**

**W.URN20.B**  
**\$290 + GST**

**W.URN30.B**  
**\$330 + GST**



### MICROWAVE OVENS

**MD-1000L - 1000 Watt**  
**MD-1400 - 1400 Watt**



**MD-1000L**  
**\$515 + GST**

SilverChef. \$7.19  
Per Week

**MD-1400L**  
**\$860 + GST**

SilverChef. \$12.01  
Per Week



### CONVECTION OVEN

**TD-3NE - 3 x Tray - 15amp**

**TD-3NE**  
**\$1,130 + GST**

SilverChef. \$15.78  
Per Week



### CONVECTION OVENS

**YXD-1AE - 4 x Tray - 10amp**  
**YXD-8A-3 - 3 x Tray - 15amp**  
**YXD-8A - 4 x Tray - 27amp**  
**YXD-8A/15 - 4 x Tray - 15amp**



**YXD-1AE**  
**\$890 + GST**

SilverChef. \$12.43  
Per Week



**YXD-8A-3**  
**\$1,725 + GST**

SilverChef. \$24.08  
Per Week



**YXD-8A/15**  
**\$1,980 + GST**

SilverChef. \$27.64  
Per Week



**YXD-8A**  
**\$1,980 + GST**

SilverChef. \$27.64  
Per Week



SilverChef.

APPLY FOR FINANCE

**4226 9779**

# FRYMAX

## SINGLE PAN GAS FRYERS

RC300E - 2 BASKETS / 23 Litre

RC400E - 2 BASKETS / 25 Litre

RC500E - 3 BASKETS / 37 Litre

\* AVAILABLE IN NATURAL & LP GAS



**RC300E**  
**\$1,770 + GST**

SilverChef. \$22.76  
Per Week

**RC400E**  
**\$2,235 + GST**

SilverChef. \$29.95  
Per Week

**RC500E**  
**\$2,770 + GST**

SilverChef. \$35.74  
Per Week



**DELIVERY &  
GAS INSTALLATION  
ALSO AVAILABLE**



**ATFS-40**  
**\$1,650 + GST**

SilverChef. \$23.04  
Per Week

**AT80G6C-F**  
**\$2,150 + GST**

SilverChef. \$30.02  
Per Week

**AT80G6G-F**  
**\$1,900 + GST**

SilverChef. \$26.53  
Per Week

**AT80G4B-F**  
**\$2,230 + GST**

SilverChef. \$31.13  
Per Week

**AT80G6B-O**  
**\$4,135 + GST**

SilverChef. \$57.73  
Per Week

# Cook Rite

## GAS COOKING EQUIPMENT

ATFS-40 - 2 BASKETS / 26.4 Litre

AT80G6C-F - CHAR GRILL w/Stand

AT80G6G-F - GRIDDLE w/Stand

AT80G4B-F - 4 BURNER w/Stand

AT80G6B-O - 6 BURNER OVEN RANGE

\* AVAILABLE IN NATURAL & LP GAS



## DELUXE WATERLESS WOK COOKING

UFWWD-1 - SINGLE HOLE

UFWWD-1L - SINGLE HOLE LGE

UFWWD-1SB2 - SINGLE HOLE with 2 BURNERS

UFWWD-2 - TWO HOLE

UFWWD-2SB2 - TWO HOLE with 2 BURNERS

UFWWD-3 - THREE HOLE

\* AVAILABLE IN NATURAL & LP GAS



**UFWWD-1**  
**\$3,170 + GST**

SilverChef. \$44.26  
Per Week

**UFWWD-1L**  
**\$3,610 + GST**

SilverChef. \$50.40  
Per Week

**UFWWD-1SB2**  
**\$4,370 + GST**

SilverChef. \$61.01  
Per Week



**UFWWD-2**  
**\$5,265 + GST**

SilverChef. \$73.51  
Per Week

**UFWWD-2SB2**  
**\$6,495 + GST**

SilverChef. \$90.68  
Per Week

**UFWWD-3**  
**\$7,140 + GST**

SilverChef. \$99.69  
Per Week

SilverChef.

APPLY FOR FINANCE

**4226 9779**

**kwik**  
HOSPITALITY EQUIPMENT